

## Known Corson Lines

**Division I** - Descendants of Cornelius Cursonwhit, New England (includes Colson)  
(Genetic signature established)

**Division II** - Descendants of Jan Corszen, Sussex County, NJ (includes Corsa, Coursen, Courser, Decoursey, Corsaw)  
(Genetic signature established)

**Division III** - Descendants of Cors Pieterz, Staten Island, NY (includes Vroom)

**Division IV** - Descendants of Carsten Jansen, Cape May County, NJ  
(Genetic signature established)

**Division Va** - Descendants of Corsons from Scotland

**Division VII** - Descendants of Jacob Corson, Hunterdon County, NJ  
(Genetic signature established)

**Division XV** - Descendants of Coursons in the southern United States (includes Coursey)  
(Genetic signature established)

### Unconnected families descended from:

- Joshua Corson, Sr. (1770-bef. 1824), Maurice River Twp., Cumberland Co., NJ
- William DeCoursey (ca. 1708-1788), Bensalem Twp., Bucks Co., PA

## Online Information

Corson/Colson Family History Assn.  
<http://homepages.rootsweb.com/~ccfha/>

Corson Surname DNA Project  
<http://www.corsondna.com>

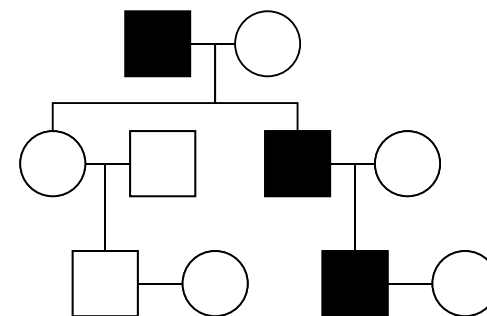
DNA Ancestry Laboratory  
<http://dna.ancestry.com>

Information about DNA Genealogy  
[http://genealogy.about.com/cs/geneticgenealogy/a/dna\\_tests.htm](http://genealogy.about.com/cs/geneticgenealogy/a/dna_tests.htm)

# Corson Surname DNA Project

sponsored by the

Corson/Colson  
Family History Association



<http://www.corsondna.com>

Genealogists recently began using genetic information to supplement traditional methods of genealogical research. By comparing small segments of the Y-chromosome carried by men with the same (or a related) surname, genetic genealogy can indicate how closely two men, and thus their direct male-line families, might be related. This technique can help organize family lines when documentation is lacking, and it is especially useful for families who have been unable trace their ancestry beyond a specific male ancestor. It often can confirm a suspected relationship with a specific family line and rule out relationships with other family lines. It also can indicate the origins of family progenitors – all without relying on the existence of historical documents.

## About the Project

This surname project compares DNA signatures of men with the Corson surname (and related variants such as Colson, Courson, Corsen, Coursen, Corsa, Vroom, DeCoursey, etc.). By doing so, it hopes to help answer some long unanswered questions about these families:

1. From what parts of Europe did the progenitors of known U.S. families come?
2. Were any of the progenitors closely related?
3. To what known family lines do unconnected families belong?

## How to Participate

Adult males with the Corson surname (or a variant) are welcome to participate by submitting DNA samples for testing. Since the DNA tested is passed only in the direct male line, females with the Corson surname, or individuals descended from them, can participate by identifying a male relative for testing or by volunteering to subsidize all or part of the test cost for someone in their family line. The test does not reveal medical or personally identifying information.

The project recommends the 37-marker Y-DNA test from the Family Tree DNA laboratory. Partial reimbursements are available for individuals from certain family lines. If the cost of the test would be the only barrier keeping you from participating, please contact the

project coordinator to see if additional funds are available for testing someone from your family line.

Project membership currently exceeds 55 members. The results received to date have established ancestral genetic signatures for five of the major Corson family lines and have given us good starts on the rest. You can find out more information about the project and see the current project results online, at

<http://www.corsondna.com>

If you have any questions or wish to participate in the project, please contact the project coordinator:

Michael Corson  
Lieu-dit Le Bas Bourg  
35360 La Chapelle Chaussée  
FRANCE

E-mail: [misccorson@yahoo.com](mailto:misccorson@yahoo.com)  
Phone: +33 2 99 45 84 24